



# NEWS

December 2010 • ISSUE Twelve

**Address:**

Tennessee Art League  
808 Broadway  
Nashville, TN 37203  
Phone: 615.736.5000  
Fax: 615.844.3434

**Website:**

[www.TennesseeArtLeague.org](http://www.TennesseeArtLeague.org)

**Email:**

[talgalleries@bellsouth.net](mailto:talgalleries@bellsouth.net)

**TAL Hours: Tues-Sat, 10-4**

**Closed: Mon & Sun**

**President**

Terri Jordan

**Executive Director**

George Anderjack

**Administrative Assistant**

Kristina Lyle

**Bookkeeper**

Jan Batts

**Premiere Gallery**

Ev Niewoehner

**Ethel Smith Gallery**

Vinci Kolodziejcki

**Members' Galleries**

Monthly Members' Exhibit

**Poston3 Gallery**

Salon d'Art

**Gallery Crawl**

Saturday, December 4, 6-9pm

**Deadline Members' Gallery**

The deadline to drop off work for the next members' show will be Wednesday, Dec. 29 before 4pm.

No Late work will be accepted.

**Deadline TAL Gift Shop**

The deadline is Friday, Dec. 17. Please bring them before 1pm. If you have questions, contact Glenna at [glennacookart@comcast.net](mailto:glennacookart@comcast.net).

**Newsletter Deadline**

Wednesday, December 15  
Email: [talgalleries@bellsouth.net](mailto:talgalleries@bellsouth.net)

The Tennessee Art League

*cordially invites its Members to*

The Annual Holiday  
and Volunteer Recognition Reception

Sunday, December 12, 2010

2 o'clock until 4 o'clock in the afternoon

The Volunteer Recognition Ceremony  
*begins at 3 o'clock.*

*If you wish to bring a dessert, please phone and let us know.*

Please RSVP by December 8<sup>th</sup> (615) 736 - 5000

## Holiday Hours

TAL will be closed on the following for the holidays:

December 24, Christmas Eve

December 25, Christmas Day

December 31, New Year's Eve

January 1, New Year's Day

The January gallery crawl will be the second Saturday in January, Jan. 8, 6-9pm.

# EV NIEWOEHNER

Featured artist in the  
Tennessee Art League  
**Premiere Gallery**

**November 3—December 31**

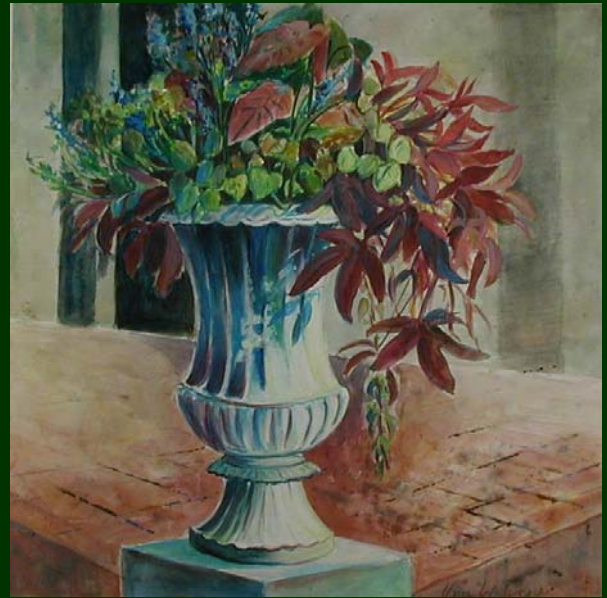


Tennessee Art League  
808 Broadway, Nashville, TN  
615-736-5000

# Ethel Smith Gallery

*presents*

## Vinci Kolodziejski



**December 2 - December 29**  
**Opening Reception:**  
**Saturday, December 4, 6-9pm**

# Poston3 Gallery

*presents*

## Salon d'Art



**December 2 - December 30**

**Opening Reception:**  
**Saturday, December 4; 6-9pm**

# Members' Gallery

*presents*

## Monthly Members' Exhibit



**December 2 - December 29**  
**Opening Reception:**  
**Saturday, December 4, 6-9pm**

# Premiere Gallery Artist for 2011 & 2012

JUL / AUG 2011



SEPT / OCT 2011



NOV / DEC 2011



MAR//APR 2012



JAN/ FEB 2012



Juror: Ned Crouch: Former Director, Customs House Museum, art restorer & sculptor.

**ARTIST STUDIO AVAILABLE**

**Contact George**

**Tel: 615.736.5000**

## **New Members**

LeeAnn Love, Nashville  
Christine McCreary, Nashville  
Joanna Nygard-Slay, Nashville  
Jim Pfeffer, Smyrna

## Volunteer Needs:

Members if you are unsure about volunteering, please telephone me with your questions. I send out a notifications by email for call to volunteer for a specific need, special event or function. Members receive these notifications based upon what they selected on their membership applications when they became a member or when they renewed their membership. Members who are not receiving notifications for the area of volunteer obligations they selected or members who want to receive notifications or change a volunteer area, please let me know. All volunteers are always welcomed. On-going volunteer needs are always posted in the newsletter or EBlast.

Thank you,  
Kristina

---

### Areas of Volunteer Need: Gallery Crawl Needs:

Kitchen assistance  
Front desk coverage  
Gift shop attendant  
Gallery Floaters (1st floor only)  
Setup & takedown help

**First Saturday Gallery Crawl December 4; 6-9pm**

### Holiday Party Needs:

Kitchen assistance  
Front desk coverage  
Gift shop attendant  
Gallery Floaters (1st floor only)  
Setup & takedown help

**The Holiday Party is Sunday, December 12; 2-4 pm**

### Maintenance & Cleaning Needs:

Clean all three floors bathrooms, vacuum all floors and foyer and any kitchen or trash pickup. If you can assist, please come on either Thursday or Friday between the hours of 11-1. If these hours are not convenient for you, please contact me directly to work out a time.

### Contact Info:

Kristina Lyle 615.736.5000  
talgalleries@bellsouth.net

## January Exhibits

- Premiere -  
Brandt Hardin  
- Ethel Smith Gallery -  
TBA  
- Members' Gallery -  
Monthly Members' Exhibit  
- Poston3 -  
TBA

---

### Tennessee Art League's 2010 Membership Campaign

To encourage growth in TAL's Membership, the Board has proposed the following goals and benefits for current members:

- If a current TAL Member recruits 4 new (or former) Exhibiting TAL Members by December 31, 2010, the member will receive a fully-paid renewal for him or herself.
- If a current TAL Member recruits 4 new Student TAL Members by December 31, 2010, the member will receive a 50% discount in his or her renewal.

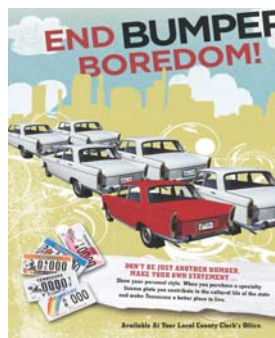
To receive credit for recruiting new TAL Members, please be sure to write your name clearly on the bottom of the TAL applications that you distribute to prospective new or returning members. To receive TAL applications or answers to any questions that you might have regarding membership, please contact Kristina.

615.736.5000; [talgalleries@bellsouth.net](mailto:talgalleries@bellsouth.net)

---

### Newsletter Sponsors

The James Stephen  
Turner Family Foundation



**METRO ARTS**  
Metropolitan Nashville Arts Commission

**the arts**  
changing lives!  
TENNESSEE ARTS COMMISSION