



NEWS

November 2010 • ISSUE Eleven

Address:

Tennessee Art League
808 Broadway
Nashville, TN 37203
Phone: 615.736.5000
Fax: 615.844.3434

Website:

www.TennesseeArtLeague.org

Email:

talgalleries@bellsouth.net

TAL Hours: Tues-Sat, 10-4

Closed: Mon & Sun

President

Terri Jordan

Executive Director

George Anderjack

Administrative Assistant

Kristina Lyle

Bookkeeper

Jan Batts

Premiere Gallery

Ev Niewoehner

Ethel Smith Gallery

Kristina Lyle

Members' Galleries

Monthly Members' Exhibit

Poston3 Gallery

Middle Tennessee Mental Health &
Substance Abuse Coalition

Gallery Crawl

Saturday, November 6, 6-9pm

Deadline Members' Gallery

The deadline to drop off work for
the next members' show will be
Wednesday, Nov. 24 before 4pm.

No Late work will be accepted.

Deadline TAL Gift Shop

The deadline is Friday, Nov. 19.
Please bring them before 1pm. If
you have questions, contact Glenna
at glennacookart@comcast.net.

Newsletter Deadline

Wednesday, November 17
Email: talgalleries@bellsouth.net

Dear TAL Members:

As we roll into the start of the holiday season, we go into full swing with our annual fundraising event. For this year's annual fundraiser, The Board of Directors brought in a professional party planner Elizabeth Scokin to organize over 20 themed dinners, parties and teas to be held in and around Nashville. Our hostesses and hosts have given positive feedback about how impressed and inspired they are by the Tennessee Art League efforts to continue our outreach, after-school programs with Nashville's youth.

Relating to the subject of Nashville's youth and our after-school programs, we are currently looking for a volunteer from our membership to become the Education Chair. If you are interested in this opportunity to become more involved with the Art League, please contact George for more information. Becoming the Education Chair will be an excellent opportunity to earn your volunteer hours.

TAL's building is always in need of cleaning. George and Kristina cannot always be the ones to clean the building for special events. We know cleaning bathrooms, sweeping, vacuuming may not be glamorous but is necessary. I would like to take this opportunity to thank Diane Ryder for her help trying to keep the building clean for guest and members. Please contact Kristina if you can assist with housekeeping.

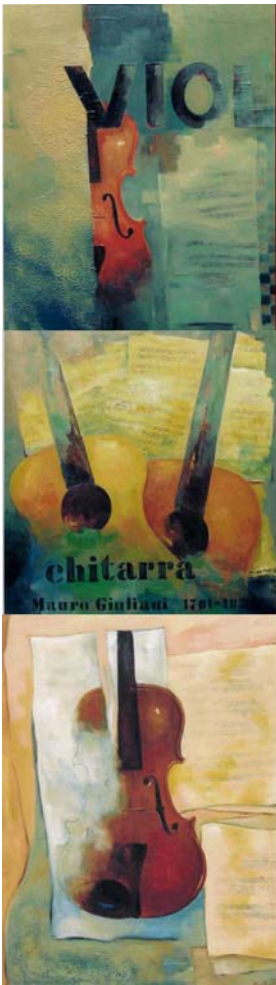
As I was thinking about the upcoming Thanksgiving holiday, I would like to say "Thank you" to the Board of Directors for their work and the TAL ladies who are hostesses for our fundraiser dinner-*Renoir's Boating Party*-to be held at the Art League here on the November 4th. Arlene Bates, Mar Augelli, Jan Batts and Wendy Latimer thank you for volunteering to host *Renoir's Boating Party*. Additionally, I want to thank our new CSAE Chair Rafaat Zachery for his professionalism and efforts to make the 2011 CSAE a bigger success. Edie Maney and Jan Batts thank you for being site managers at TAL for this year's Artrageous event to be held on November 13th. We all hope it is a great success for the Art League and Nashville Cares. Finally, I want to give thanks to Kristina Lyle and George Anderjack, both wear many hats to keep this place organized and open for members and the public.

All these volunteers have stepped up this year to help move TAL forward with new ideas and events. I look forward to you and the membership to keep the momentum going.

In a future newsletter, I look forward to sharing with you information on this year's fundraiser. Until then, let us all continue to be creative and think "outside the box."

Sincerely,

Terri Jordan
President



Ev Niewoehner

Featured artist in the
Tennessee Art League
Premiere Gallery

November 3—December 31

Opening Reception
November 6th
6 pm to 9 pm

Tennessee Art League
808 Broadway, Nashville, TN
615-736-5000

Poston3 Gallery

presents



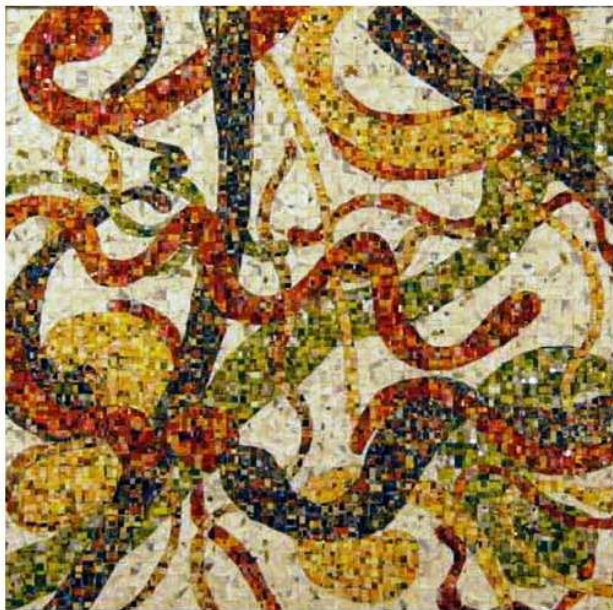
Middle Tennessee Mental Health and Substance Abuse Coalition

November 2 - November 27

Opening Reception:
Saturday, November 6, 6-9pm

New Works by Kristina Lyle

November 2– 27, 2010



Opening Reception: November 6, 2010; 6-9pm

Tennessee Art League • 808 Broadway • Nashville, TN

Members' Gallery

presents

Monthly Members' Exhibit



November 2 - November 27

Opening Reception:
Saturday, November 6, 6-9pm

The Tennessee Art League

cordially invites its Members to

The Annual Holiday
and Volunteer Recognition Reception

Sunday, December 12, 2010

2 o'clock until 4 o'clock in the afternoon

*The Volunteer Recognition Ceremony
begins at 3 o'clock.*

*If you wish to bring a dessert, please phone and let
us know.*

Please RSVP by December 8th
(615) 736 - 5000

Dear TAL Members:

I would like to give a special thank you to "Special TAL Members" for their extraordinary volunteer service:

Topping the list, I'd like to recognize Barry Werner for the wonderful job he did in rebuilding the back entrance to the TAL building that had rotted and collapsed.

I'd like to thank Noriko Register, Sally Murphy and Christine Parachek-Marshall for their landscaping and beautification work in the TAL Parking Lot. Their efforts were definitely needed.

I'd like to say thank you to Terri Jordan, Geralda Shockey, Jan Batts, Peach McComb and Barry Werner for their generous art donations to the Special Fundraising Dinners and Events.

A special thank you goes to Jean Carter Wilson for all her hard work and dedication in creating supportive and descriptive media releases in a timely manner, which helps get the word out quicker and spark community interest about our annual fundraiser as well as our monthly exhibits. A special thank you to Diana Springfield who helps Jean in our marketing efforts, and thank you to Peach McComb who has recreated TAL's facebook page and actively manages it.

As part of our annual fundraiser, I would to extend a thank you to Wendy Latimer, Jan Batts, Arlene Bates and Mar Augelli for their work on the *Renoir Boating Party* to be held at the Art League, and to Edie Maney and Jan Batts for serving as site managers for TAL at this year's Artrageous event to benefit Nashville Cares.

I would also like to recognize the generous donation made in memory of Marjorie Sivils by her daughter Arlene Bates. I want to extend my gratitude to Edie Maney, Wendy Latimer and Jan Batts who also made a monetary donation in memory of Arlene's mother.

Finally, I would like to thank Kristina for the many hours spent talking with AT&T to fix our internet and phone issues. Without her efforts we would be without vital communication services.

And, to all those who help TAL with our monthly gallery crawls, gallery hangings and maintenance, thank you so much for your time and dedication.

With best wishes,
George

December Exhibits

- Premiere -
Ev Niewoehner
- Ethel Smith Gallery -
Vinci Kolodziejski
- Members' Gallery -
Monthly Members' Exhibit
- Poston3 -
Jan Batts' Salon d'Art

Tennessee Art League's 2010 Membership Campaign

To encourage growth in TAL's Membership, the Board has proposed the following goals and benefits for current members:

- If a current TAL Member recruits 4 new (or former) Exhibiting TAL Members by December 31, 2010, the member will receive a fully-paid renewal for him or herself.
- If a current TAL Member recruits 4 new Student TAL Members by December 31, 2010, the member will receive a 50% discount in his or her renewal.

To receive credit for recruiting new TAL Members, please be sure to write your name clearly on the bottom of the TAL applications that you distribute to prospective new or returning members. To receive TAL applications or answers to any questions that you might have regarding membership, please contact Kristina.

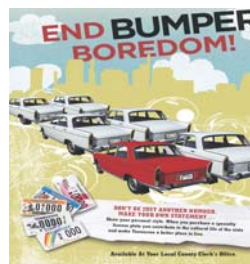
615.736.5000; talgalleries@bellsouth.net

New Members

Leanne Johnson, Goodlettsville
Gary T. Vaughn, Nashville

**Newsletter
Sponsors**

The James Stephen
Turner Family Foundation



METRO ARTS
Metropolitan Nashville Arts Commission

the arts *changing lives!*
TENNESSEE ARTS COMMISSION